

EXCALIBUR

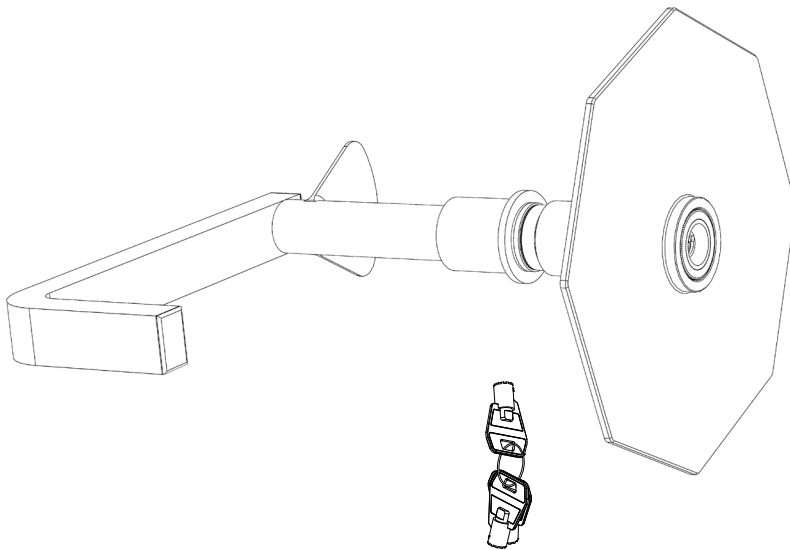
Wheel Lock

REGISTER NOW TO
ACTIVATE YOUR

5 YEAR
WARRANTY*

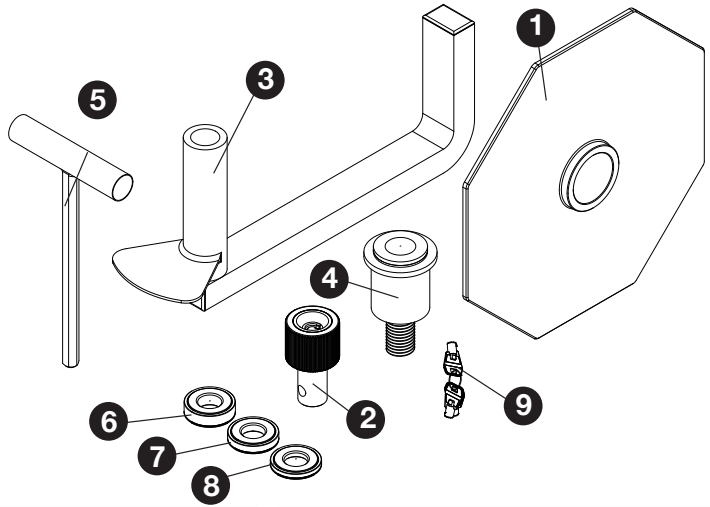
www.purpleline.co.uk
01473 601200

PRODUCT CODE: **FRL100**



PARTS IDENTIFICATION

1. Shield Section
2. Lock
3. Bolt Receiver
4. Bolt
5. Hex Tool
6. 10mm Spacer
7. 7mm Spacer
8. 5mm Spacer
9. Keys (x3)



CAUTION!
BE CAREFUL OF
POTENTIAL SURFACE
DAMAGE TO ALLOY
WHEELS WHEN
POSITIONING/FITTING
THE EXCALIBUR.

Fig.A

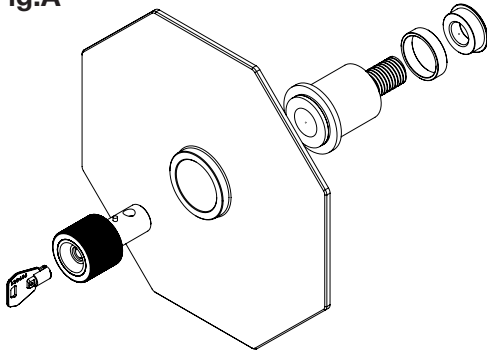


Fig.B

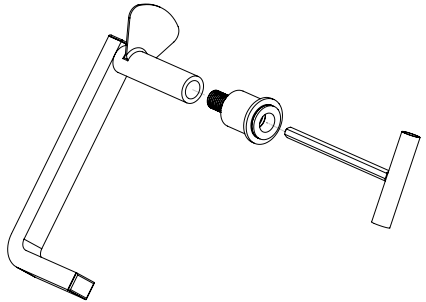


Fig.C

The fit of the Excalibur can be adjusted as necessary using the supplied 10mm, 7mm & 5mm spacers in any combination as appropriate. The spacers simply screw onto the bolt. Ensure the lip of the spacer is facing towards the end of the bolt in order to retain the freely rotating collar.



No spacer fitted.



With 10mm spacer fitted.

MAINTENANCE

Grease the lock face and ball bearings before first use, with a light oil such as 3-IN-ONE or equivalent.

Thereafter spray any moving parts of the lock body with a light oil such as 3-IN-ONE or equivalent every eight weeks.

INSTALLATION

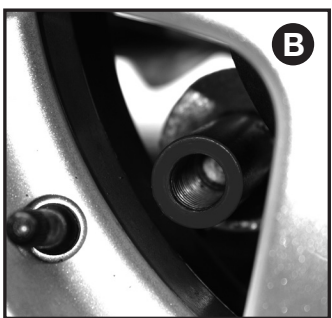
CAUTION!
Be careful of potential surface damage to alloy wheels when positioning/fitting the Excalibur.



NOTE:
Only suitable for factory fitted alloy wheels.

A. Offer up the Bolt Receiver arm (3) to the caravan wheel from the side.

C. Insert the hex tool (5) into the bolt (4). Line up the bolt to the bolt receiver's (3) threaded aperture. (see Fig.B)



B. Position the Bolt Receiver (3) so that the threaded aperture is accessible through a gap in the spokes of the alloy (it may be necessary to rotate the wheel slightly).



D. Screw in turning clockwise until as tight as possible. *Caution: Hand tight only.*



E. (see Fig.A & Fig.B for guidance)

The lock (2) is already fitted through the shield portion (1) in a locked state.

Insert the key into the lock (2), push and turn 45° clockwise to release the locking mechanism.

Fit the Lock (2) into the bolt (4), once inserted turn the key 45° anti-clockwise and remove the key.

If the key cannot be turned 45° anti-clockwise and removed, it is likely that the male lock portion cannot fully engage into the bolt. If this occurs the bolt needs to be extended using one or more of the spacers (see Fig.A & Fig.C for details on spacers).

Ideally, when properly fitted there shouldn't be a gap any larger than approx. 5mm between the face of the alloy wheel and the back face of the shield.



F. Please store your keys in a safe place and remember to register within 14 days of purchase, either by returning your fully completed registration card, or online at www.purpleline.co.uk/product-registration.



fullstop[®]

S E C U R I T Y

PRODUCT SPECIFICATION

FRL100				
Weight (kg)	Height (mm)	Width (mm)	Depth (mm)	Keys Supplied
3.9kg	350mm	230mm	220mm	3

Please store your keys in a safe place and remember to register your product.

Registration is quick and simple, go to www.purpleline.co.uk/product-registration

Please register within 14 days of purchase. Please retain your original purchase receipt.

Disclaimer

If used properly, your FullStop[®] product will be an effective deterrent. However, nothing can stop the efforts of the most determined thief, and to this end no liability is accepted for any loss and/or damage caused by any illegal activity including theft or vandalism. Liability also not accepted for any loss and/or damage arising from misuse, unauthorised repair or alteration and failure to follow the user guide directions. No form of consequential loss what so ever will be accepted.



© Copyright 2017. Purple Line Limited, Peninsula Business Centre, Wherstead, Suffolk, IP9 2BB, UK

www.purpleline.co.uk

01473 601200

Photographs for illustration purposes only. Actual product may differ slightly.
Purple Line Limited reserve the right to alter product specification without prior notice.